

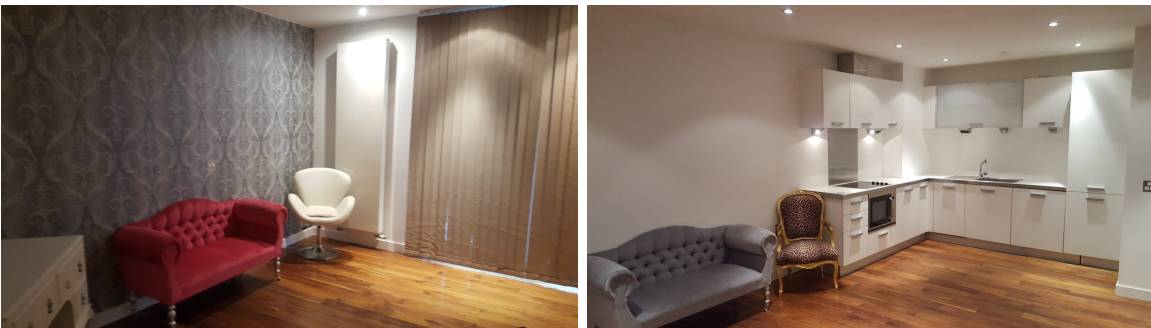
The Edge, Clowes Street, Salford, M3 5NF



A one bed apartment with parking. The apartment is situated on the 14th floor within one of the cities most prestigious developments.

The development is complete with 24hr concierge service and is just minutes walk from Deansgate. Plus it includes one parking space.

Offers Over £210,000



One Woodcock Court, Waters Edge Business Park,
1 Modwen Road, Salford Quays, M5 3EZ

www.portfolioupk.com | E: Info@portfolioupk.com | Tel: +44 (0)161 830 8833

rightmove 

 **PORTFOLIO**
properties